

Lower Merion School District



Enrollment Expansion

High School Facilities Planning

Facilities Committee Mtg

September 19, 2013

High School Planning



Facilities Considerations:

- ✓ **Classrooms and Supporting Spaces**
- ✓ **Parking and Traffic**

High School Planning



Planning Team:

- ✓ **LMSD**
- ✓ **High School Architect – KCBA**
- ✓ **High School Civil Engr – Barry Isett**
- ✓ **DAO Renovation Designer – Moore Engr**
- ✓ **DAO Additional Classrooms – Gilbert Architects**
- ✓ **Traffic Engineer – F. Tavani**
- ✓ **Zoning and LD Attorney – Fred Fromhold**

High School Planning



Township Staff Coordination:

- ✓ Meeting held July 26, 2013
- ✓ LMSD Consultants and Staff
- ✓ Director of Building and Planning
- ✓ Planning Staff
- ✓ Zoning Officer
- ✓ Township Engineer

High School Planning



Coordination topics:

- ✓ History of Enrollment
- ✓ Enrollment Projections for HS
- ✓ Timeline for School Board Decision
- ✓ New Construction; Use of DAO
- ✓ Reviewed Previous HS Approvals
- ✓ Focus on Imp. Surface, Parking
- ✓ Parking Study Planned for September

Enrollment Projections



Harriton High School

	2014-15	2015-16	2016-17	2017-18	2018-19	2019-20	2020-21	2021-22
DeJong (Original)	1,216	1,262	1,303	1,367	1,459	1,552	1,606	1,628
50/50	1,201	1,230	1,251	1,293	1,377	1,462	1,515	1,535
40/60	1,189	1,204	1,210	1,238	1,317	1,399	1,450	1,469

Lower Merion High School

	2014-15	2015-16	2016-17	2017-18	2018-19	2019-20	2020-21	2021-22
DeJong (Original)	1,324	1,415	1,425	1,462	1,467	1,476	1,542	1,574
50/50	1,339	1,447	1,477	1,536	1,550	1,566	1,634	1,668
40/60	1,351	1,473	1,518	1,591	1,609	1,629	1,698	1,733



Scenarios for Analysis	Highest Projected Enrollment (HPE) in 2021-2022
-------------------------------	--

#1 Maintain Current Boundaries (Status Quo)

HHS	1628
LMHS	1574

#2 Implement Choice, 50% HHS/50% LMHS

HHS	1535
LMHS	1668

#3 Implement Choice, 40% HHS/60% LMHS

HHS	1469
LMHS	1733

Additional Classroom Requirements



**Calculation: $(HPE - 1400)/25$
then round up.**

**Additional Classrooms
Needed:**

then round up.			HARRITON	LOWER MERION
Scenario1: Maintain Current Boundaries			10	7
HPE (2021-22): HHS = 1628; LMHS = 1574				
Scenario 2: Impl Choice, 50% HHS / %0% LMHS			6	11
HPE (2021-22): HHS = 1535; LMHS = 1668				
Scenario 3: Impl Choice, 40%HHS / 60% LMHS			0*	14
HPE (2021-22): HHS = 1469; LMHS = 1733				

*** Assumes no additional classrooms**

HHS Permanent Classroom Concept



HHS Permanent Classroom Concept

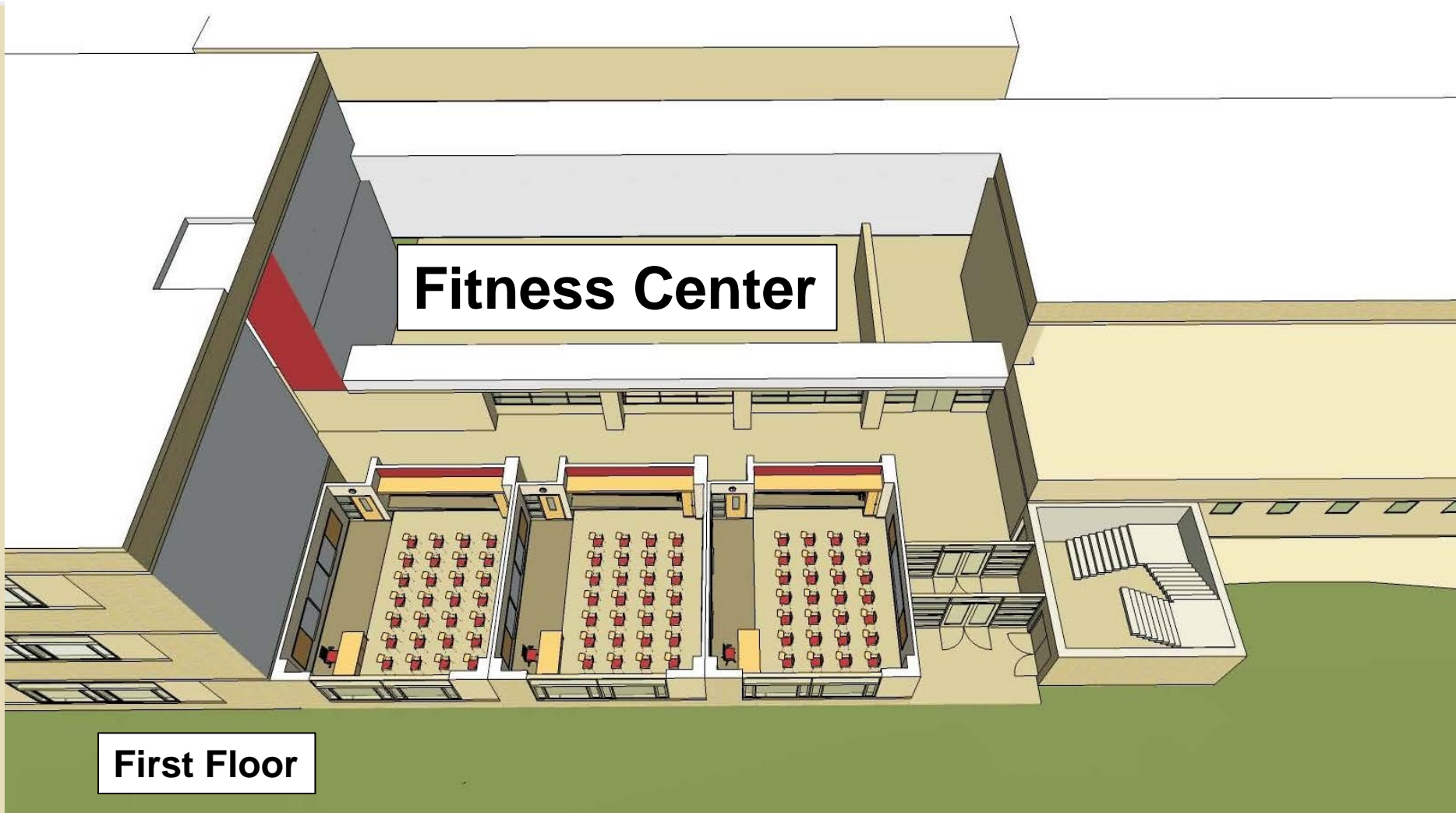


HHS Permanent Classrooms

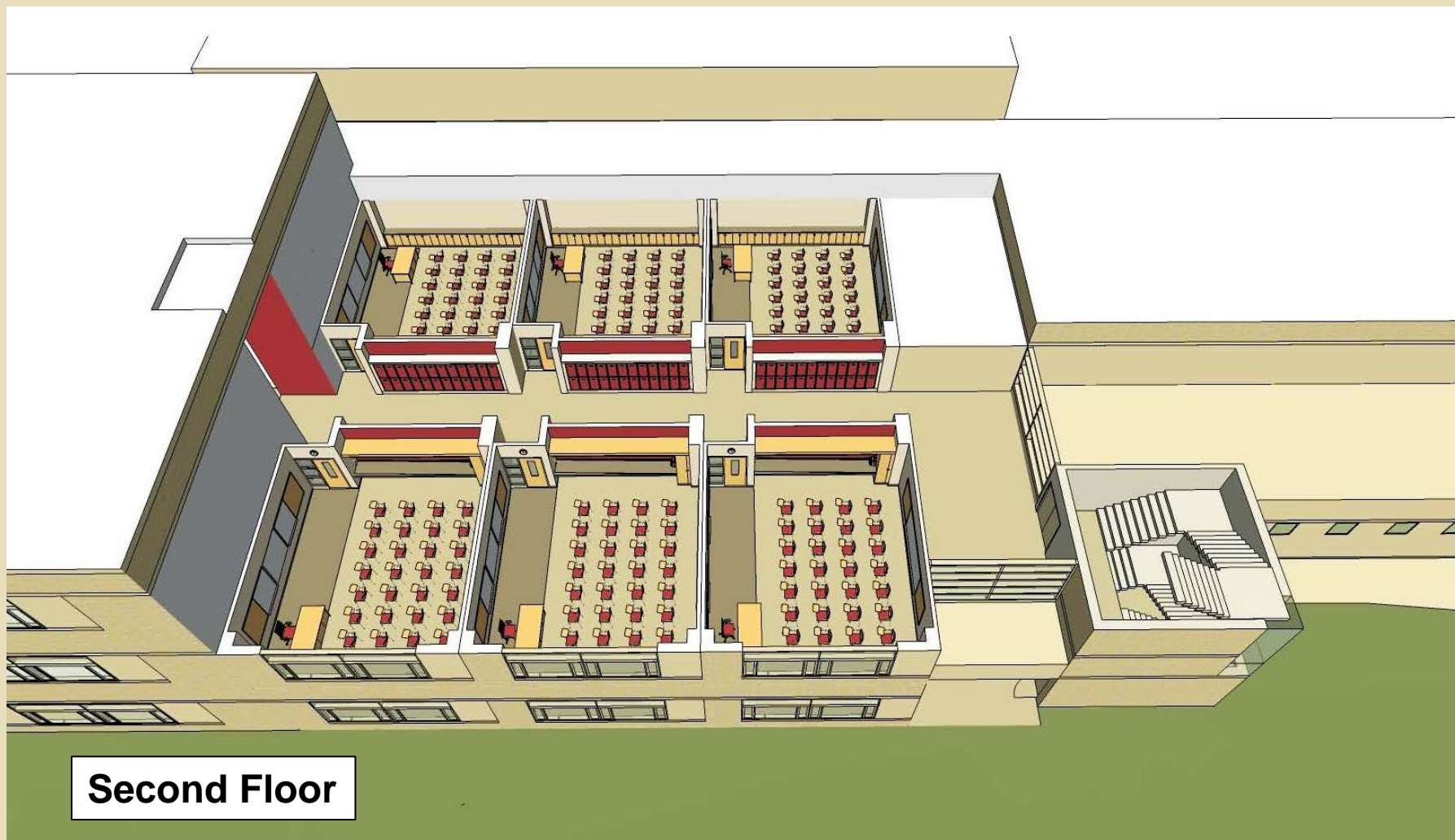


Fitness Center

First Floor

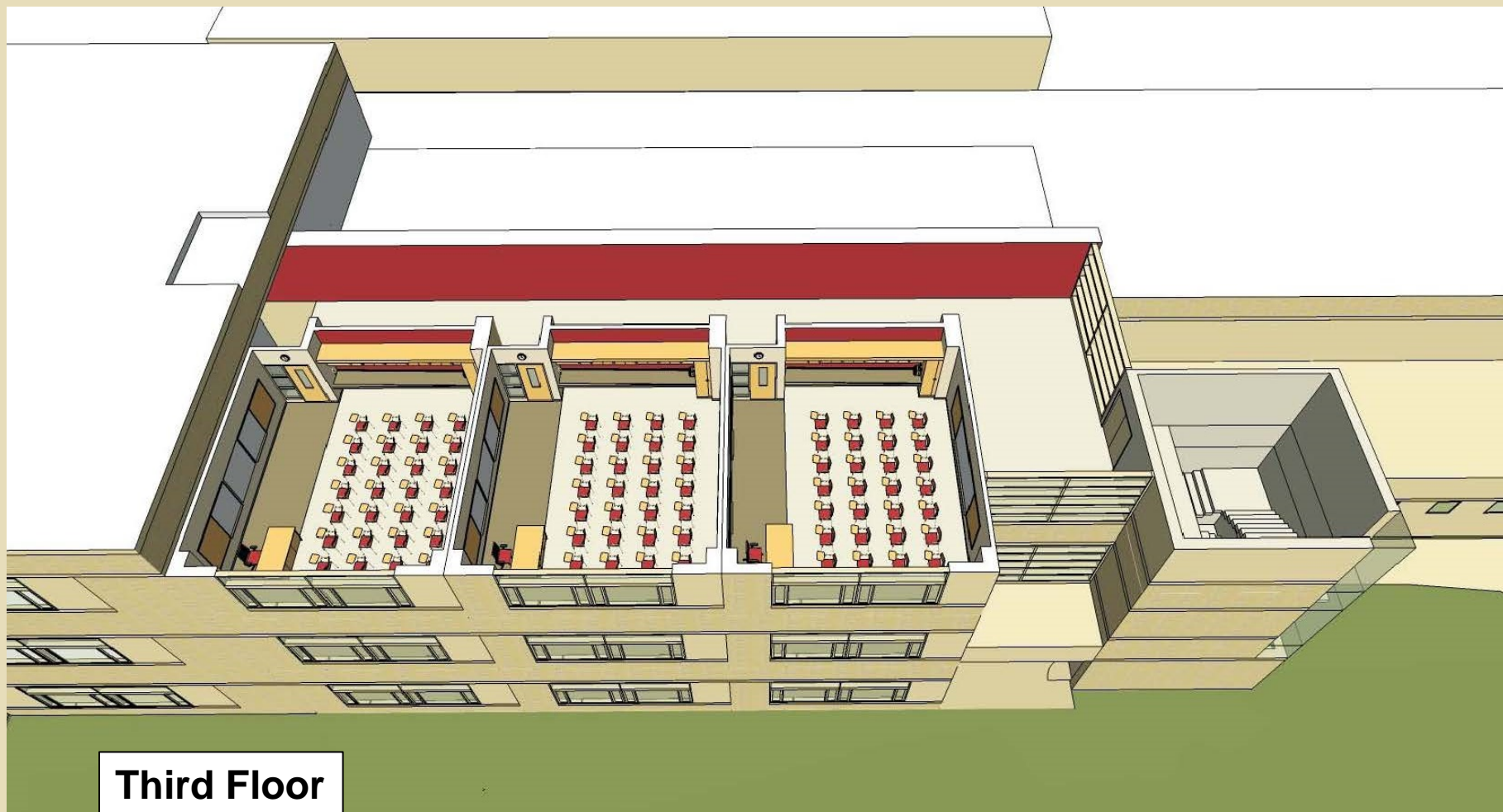


HHS Permanent Classrooms



Second Floor

HHS Permanent Classrooms



HHS Permanent Classroom Concept



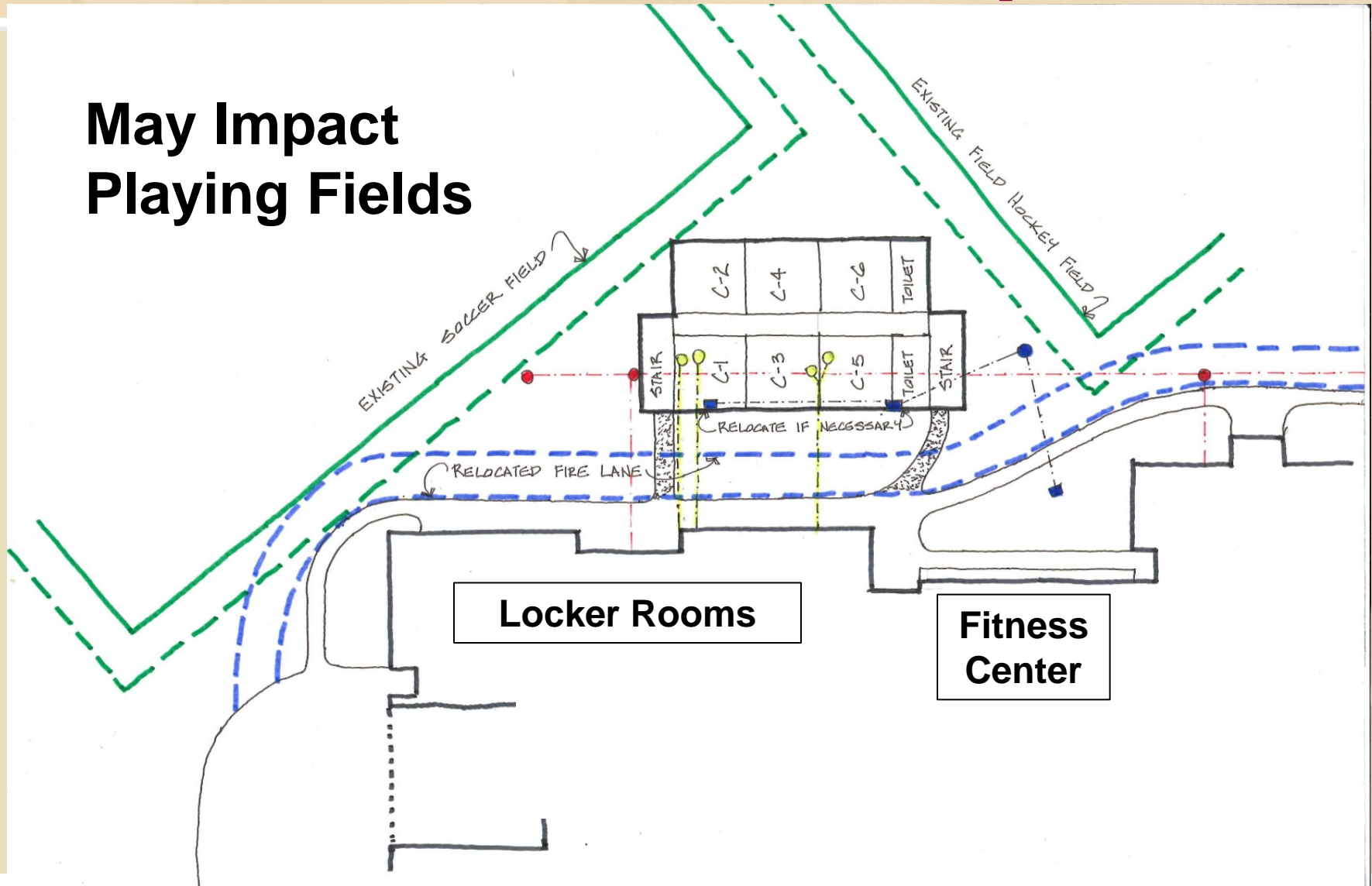
HHS Temp Classrooms



HHS Temporary Classroom Concept



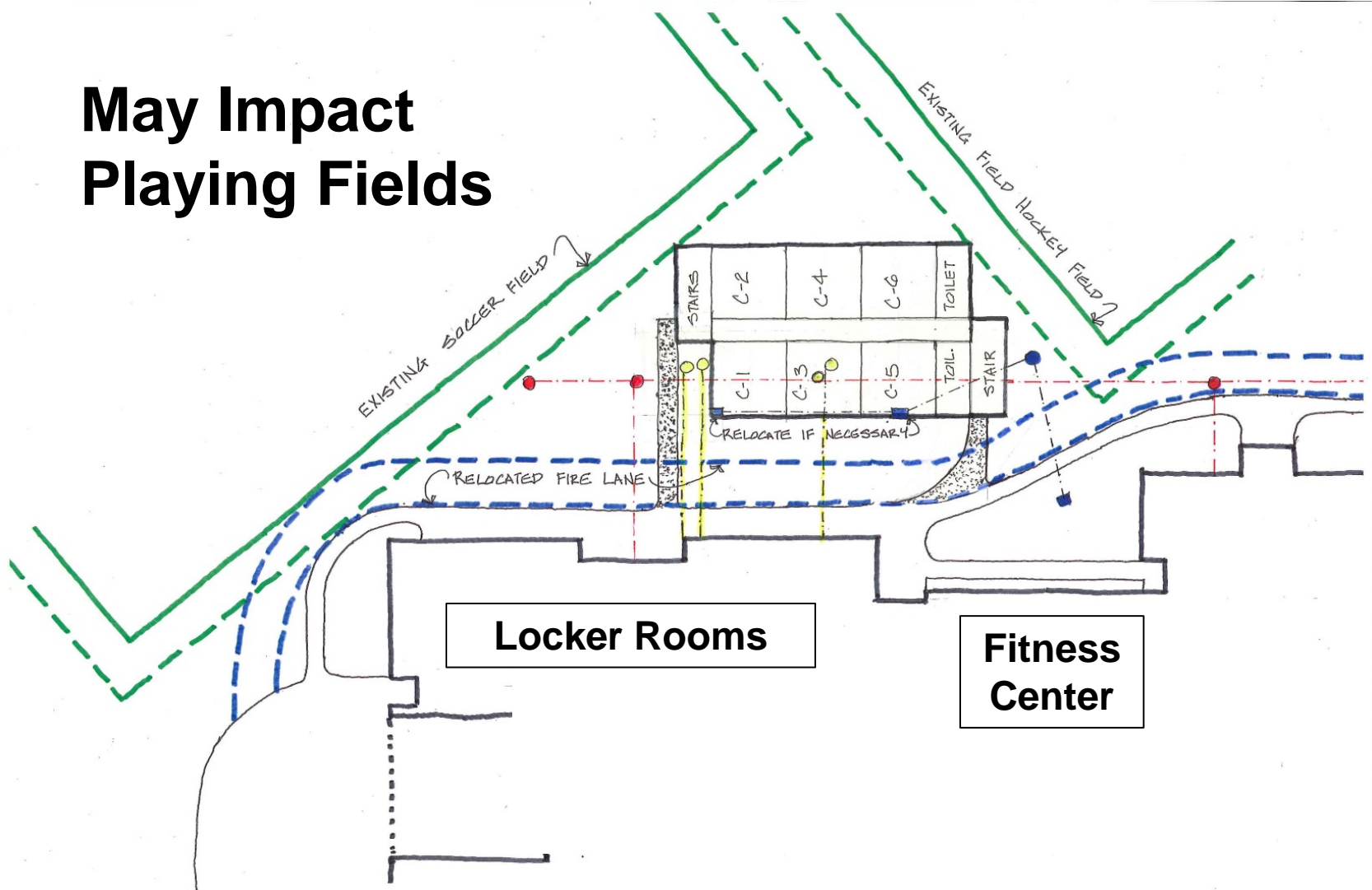
**May Impact
Playing Fields**



HHS Temporary Classroom Concept



**May Impact
Playing Fields**



HHS Temp Classrooms



Classroom Considerations



- ✓ **Impervious Surface**
- ✓ **Stormwater Management**
- ✓ **Educational Programming
(support spaces)**

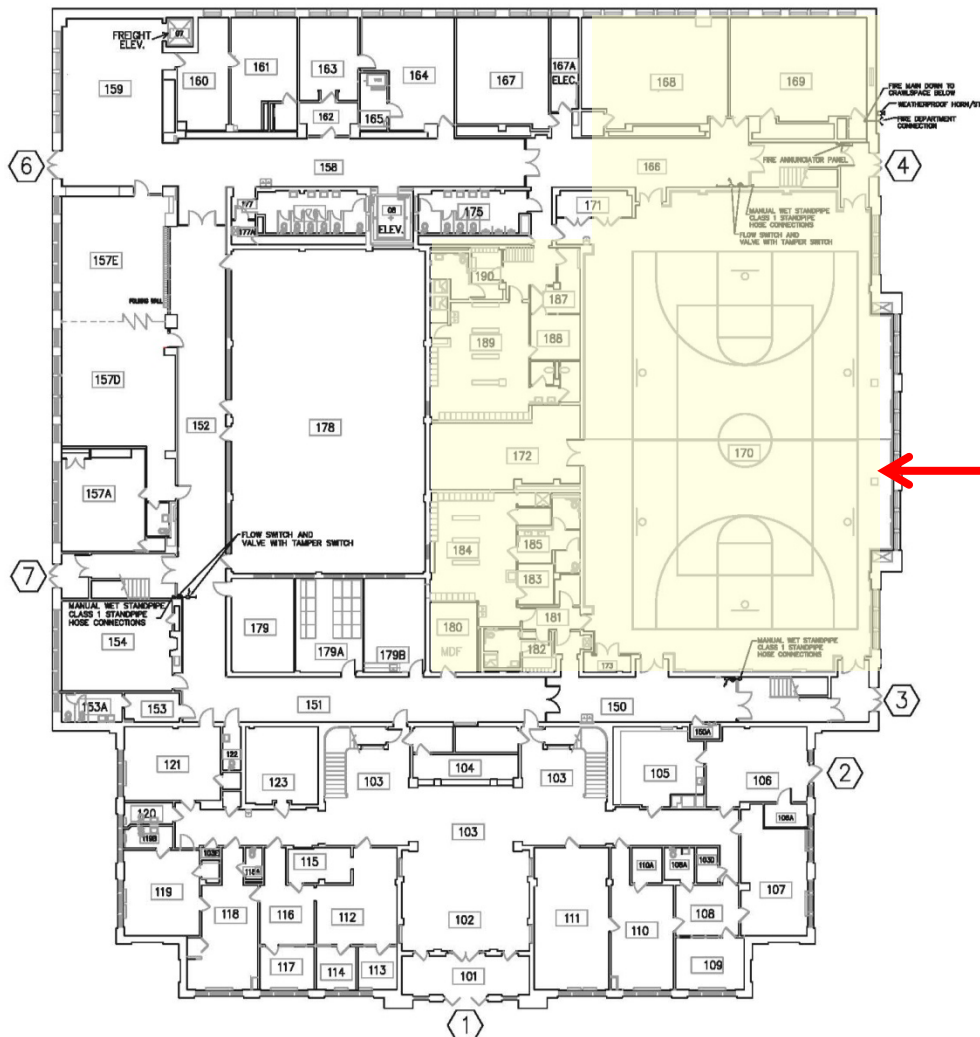
HHS Classroom Concepts Cost Estimates



Classroom Options	Description	Estimated Cost
#1	10 Permanent	5,200,000
#2	10 Temporary	2,360,000
#3	6 Permanent	3,690,000
#4	6 Temporary	1,220,000

- Assumes LMSD Purchases Temp Units
- Includes Impervious Surface, SWM

DAO Classroom Conversion Concept

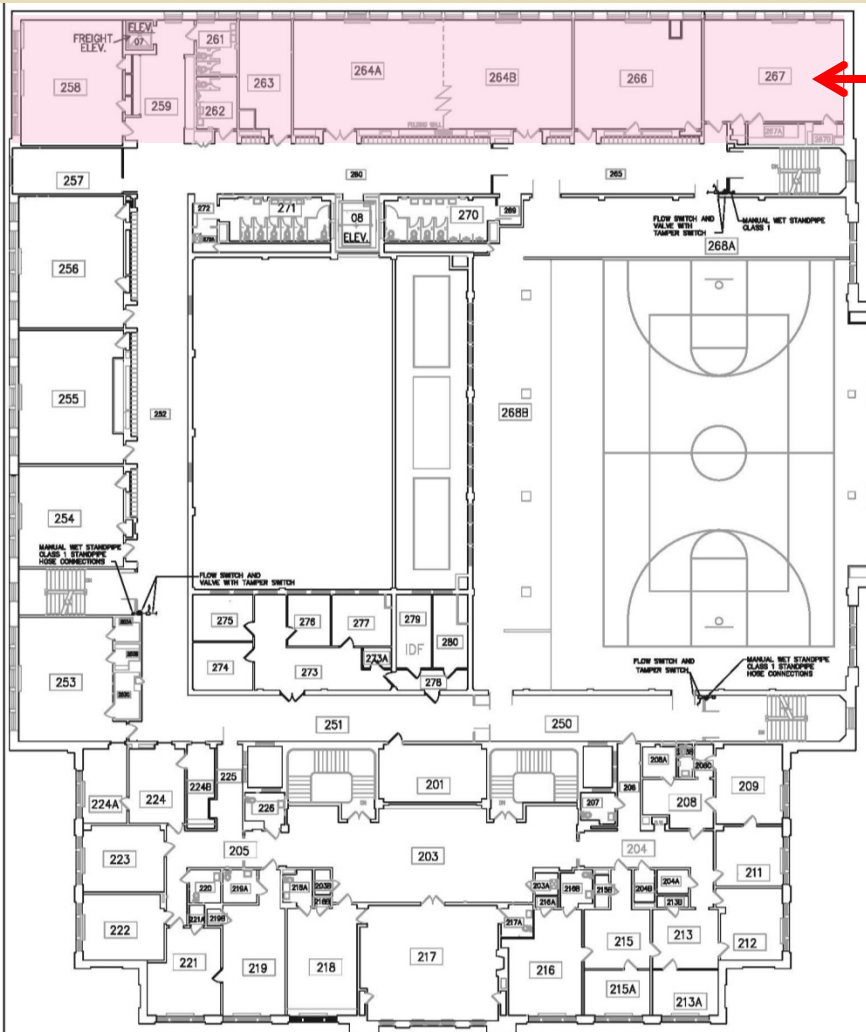


**First Floor Area
Dedicated to
LMHS**

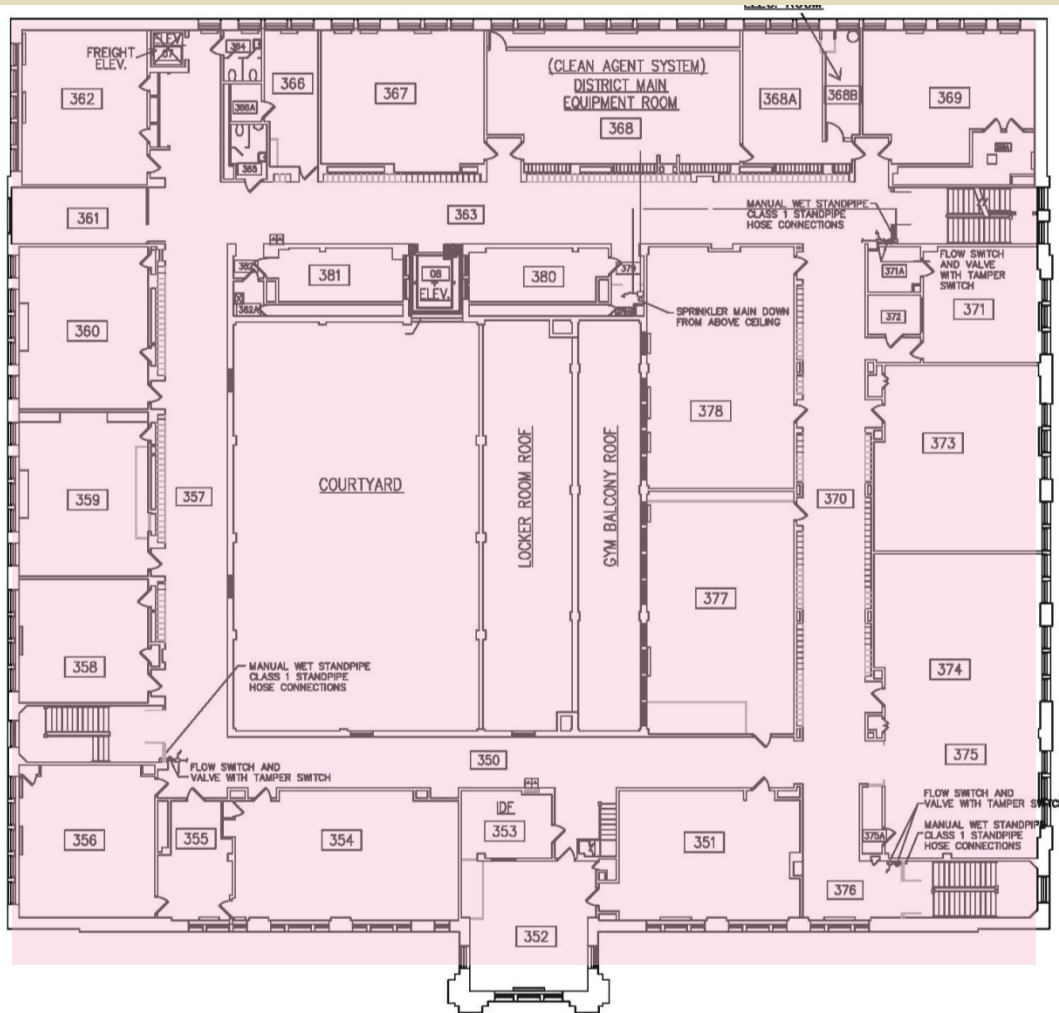
DAO Classroom Conversion Concept



**Second Floor
Area
Available
5 Classrooms
1 Small Office**



DAO Classroom Conversion Concept



**Entire Third
Floor Area
Available**
14 Classrooms
4 Potential Labs
Several Offices



DAO Building

Classroom Configuration Exists

- ✓ **21 Classrooms Available**

Recent Renovations

- ✓ **Code Compliance**
- ✓ **New Mechanical, Electrical, Plumb**
- ✓ **Alternates Not Selected**
- ✓ **Created Board Rm**
- ✓ **Using Existing Spaces for Offices**

DAO Building



Required Work for LMHS Use

- ✓ HVAC Upgrades 2d & 3d Floor
- ✓ Group Restroom 3d Floor
- ✓ Classroom Fit-Out
- ✓ Potential Science Labs
- ✓ Additional Code Upgrades

DAO Upgrades



Conceptual Cost Estimate:

\$4,460,000

- **No specific provision for Student Services Center or Department Planning Center**

Classroom Requirements Over Time (Numerical)

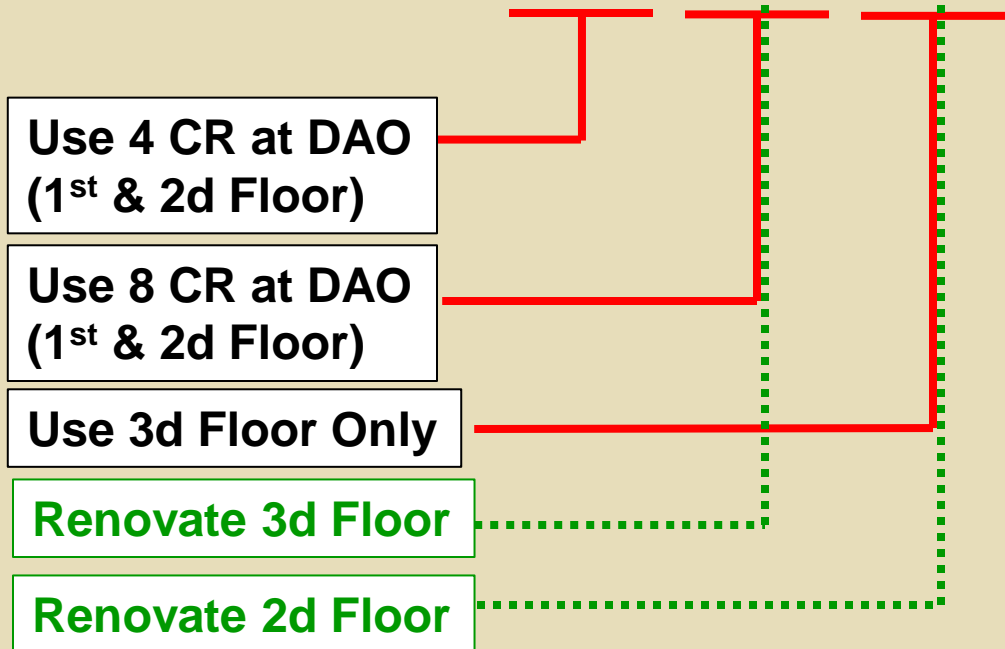


		2014-15	2015-16	2016-17	2017-18	2018-19	2019-20	2020-21	2021-22
Scenario #1 (Status Quo)	HHS	1,216	1,262	1,303	1,367	1,459	1,552	1,606	1,628
		0	0	0	0	3	7	9	10
	LMHS	1,324	1,415	1,425	1,462	1,467	1,476	1,542	1,574
		0	1	1	3	3	4	6	7
Scenario #2 (50% / 50%)	HHS	1,201	1,230	1,251	1,293	1,377	1,462	1,515	1,535
		0	0	0	0	0	3	5	6
	LMHS	1,339	1,447	1,477	1,536	1,550	1,566	1,634	1,668
		0	2	4	6	6	7	10	11
Scenario #3 (40% / 60%)	HHS	1,189	1,204	1,210	1,238	1,317	1,399	1,450	1,469
		0	0	0	0	0	0	2	3
	LMHS	1,351	1,473	1,518	1,591	1,609	1,629	1,698	1,733
		0	3	5	8	9	10	12	14

Classroom Requirements Over Time (Programmatic)



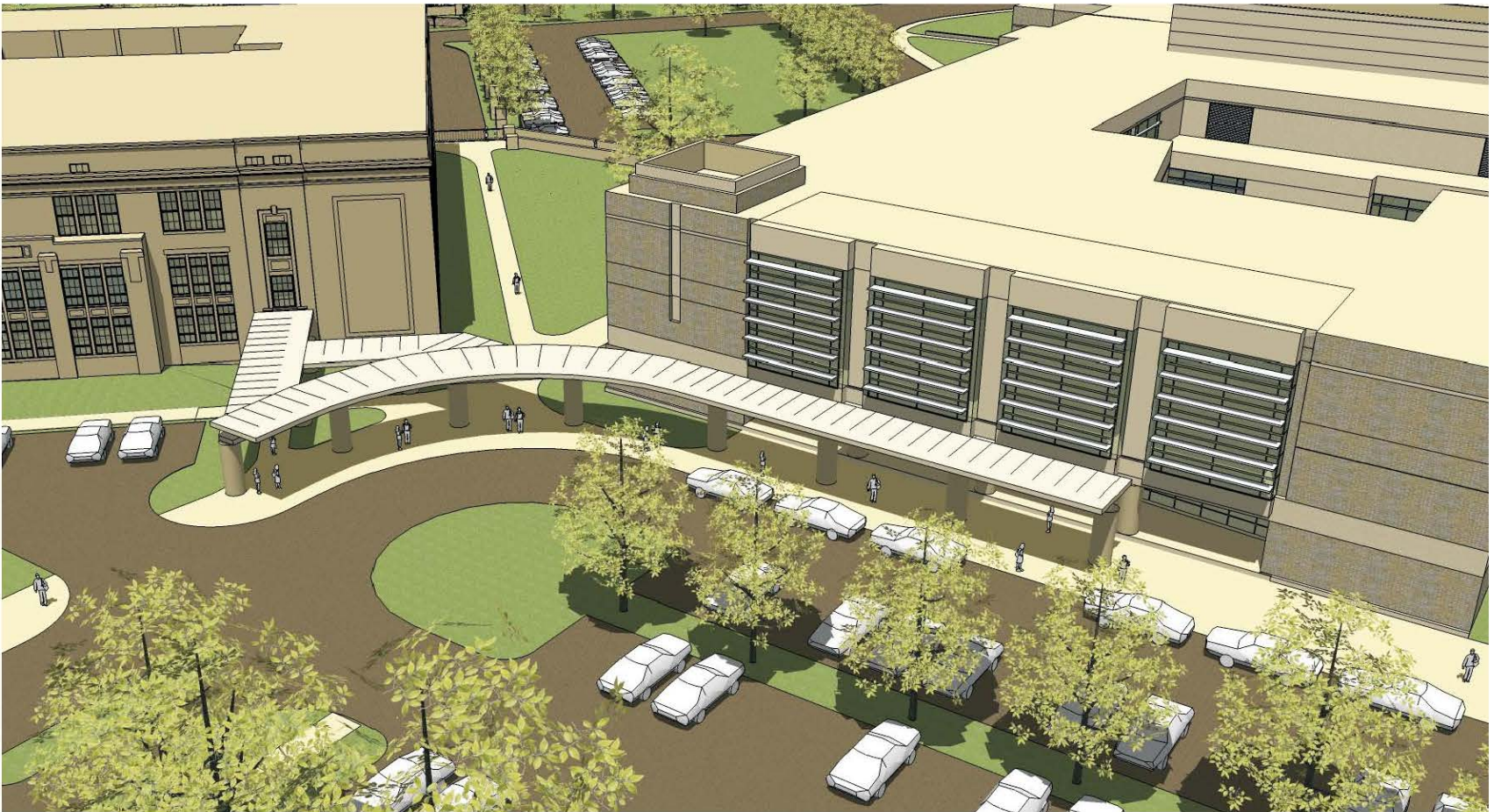
		2014-15	2015-16	2016-17	2017-18	2018-19	2019-20	2020-21	2021-22
Scenario #3 (40% / 60%)	HHS	1,189	1,204	1,210	1,238	1,317	1,399	1,450	1,469
		0	0	0	0	0	0	2	3
	LMHS	1,351	1,473	1,518	1,591	1,609	1,629	1,698	1,733
		0	4	8	12	12	12	14	14



Covered Walkway



Lower Merion High School
Revised Covered Walkway Feasibility Study
Lower Merion School District



Covered Walkway



Lower Merion High School

Revised Covered Walkway Feasibility Study
Lower Merion School District



Covered Walkway



Lower Merion High School
Revised Covered Walkway Feasibility Study
Lower Merion School District

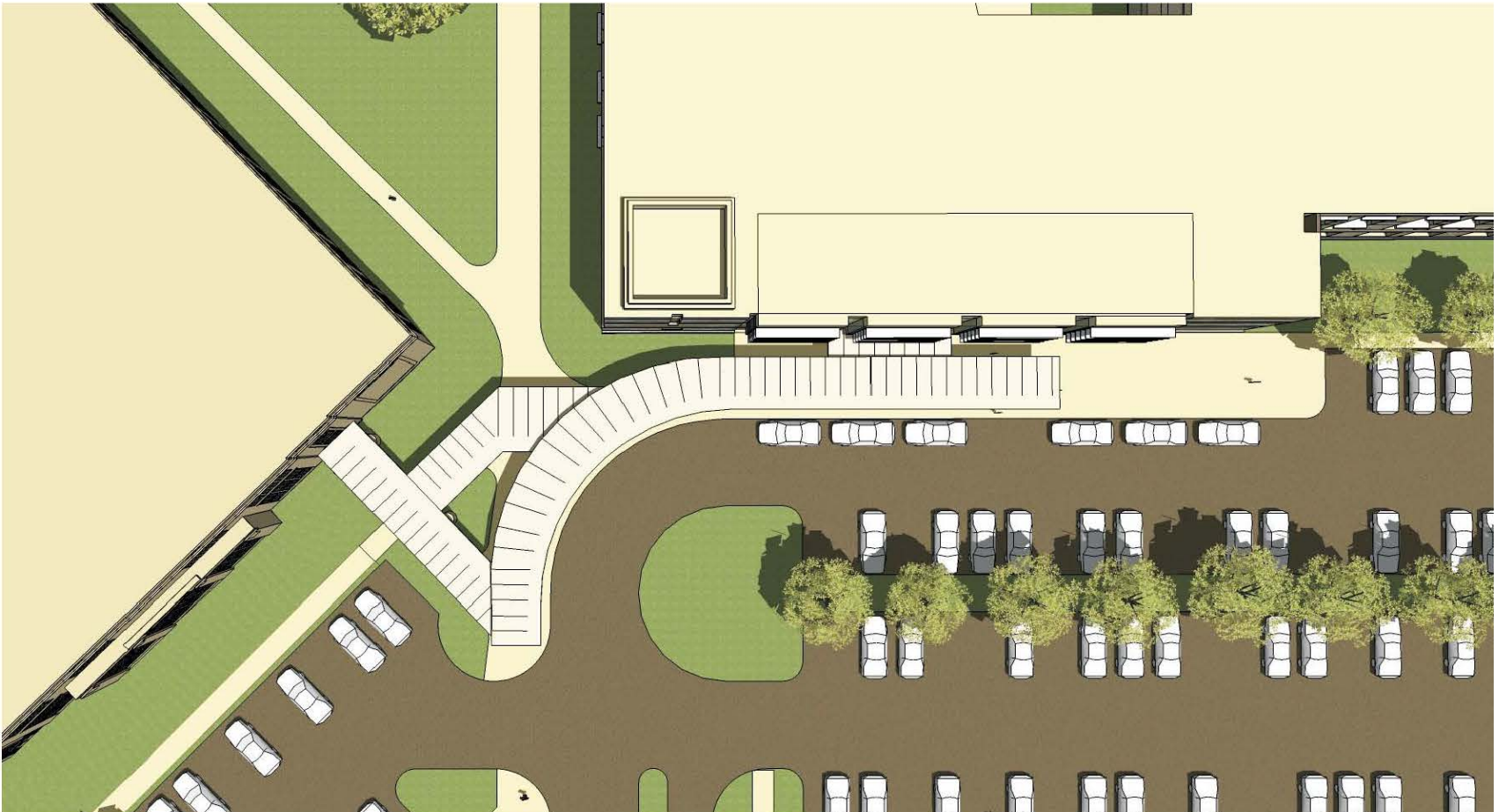


Covered Walkway



Cost Estimate: \$611,800

Lower Merion High School
Revised Covered Walkway Feasibility Study
Lower Merion School District



High School Planning



Traffic and Parking

- ✓ **Studies In Progress Now**
- ✓ **Conclusions will project future growth**
- ✓ **Township Authority**

High School Planning



Parking Requirements (Zoning Code)

- ✓ **1 Space per Employee**
- ✓ **1 Visitor Space per 25 Students**
- ✓ **1.5 Spaces for every 2 Students of Driving Age**

Previous High School Approvals

High School Planning



Additional Parking Required

- ✓ **Parking Study will Determine Existing Use**
- ✓ **Expect Increase of 70 to 100+ at Each High School**
- ✓ **Final Required Parking Increase to be Determined by Township**

Next Steps



- ✓ **Complete Traffic and Parking Study**
- ✓ **Additional Coordination with LMT Staff**
- ✓ **Develop Additional Information Based on Input from Board and Others**
- ✓ **Review and Refine Cost Estimates**

